

## Product datasheet for TA331425

### C6ORF182 (CEP57L1) Rabbit Polyclonal Antibody

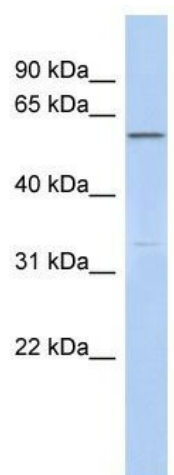
#### Product data:

Product Type:	Primary Antibodies
Applications:	WB
Recommended Dilution:	WB
Reactivity:	Human
Host:	Rabbit
Isotype:	IgG
Clonality:	Polyclonal
Immunogen:	The immunogen for anti-C6orf182 antibody: synthetic peptide directed towards the middle region of human C6orf182. Synthetic peptide located within the following region: DIECELECLLKKMEIKGEQISKLKKHQDSVCKLQQKVQNSKMSEASGIQQ
Formulation:	Liquid. Purified antibody supplied in 1x PBS buffer with 0.09% (w/v) sodium azide and 2% sucrose. <i>Note that this product is shipped as lyophilized powder to China customers.</i>
Purification:	Affinity Purified
Conjugation:	Unconjugated
Storage:	Store at -20°C as received.
Stability:	Stable for 12 months from date of receipt.
Predicted Protein Size:	54 kDa
Gene Name:	centrosomal protein 57 like 1
Database Link:	<a href="#">NP_776191</a> <a href="#">Entrez Gene 285753 Human</a> <a href="#">Q8IYX8</a>
Background:	The exact functions of C6orf182 remain unknown.
Synonyms:	bA487F23.2; C6orf182; cep57R
Note:	Rat: 100%; Human: 100%; Rabbit: 100%; Mouse: 93%; Pig: 92%; Horse: 92%; Guinea pig: 92%; Dog: 85%; Bovine: 79%



[View online »](#)

## Product images:



WB Suggested Anti-C6orf182 Antibody Titration:  
0.2-1 ug/ml; ELISA Titer: 1:1562500; Positive  
Control: Human Liver