

Product datasheet for TA331424

C6ORF182 (CEP57L1) Rabbit Polyclonal Antibody

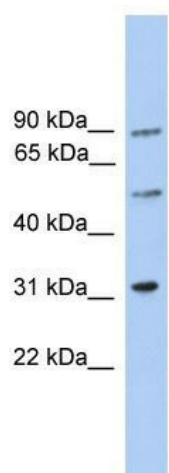
Product data:

Product Type:	Primary Antibodies
Applications:	WB
Recommended Dilution:	WB
Reactivity:	Human
Host:	Rabbit
Isotype:	IgG
Clonality:	Polyclonal
Immunogen:	The immunogen for anti-C6orf182 antibody: synthetic peptide directed towards the middle region of human C6orf182. Synthetic peptide located within the following region: LNVEREKNMILEQQAQLQREKEQDQMKLYAKLEKLDVLEKECFRLTTTQK
Formulation:	Liquid. Purified antibody supplied in 1x PBS buffer with 0.09% (w/v) sodium azide and 2% sucrose.
Purification:	Affinity Purified
Conjugation:	Unconjugated
Storage:	Store at -20°C as received.
Stability:	Stable for 12 months from date of receipt.
Predicted Protein Size:	54 kDa
Gene Name:	centrosomal protein 57 like 1
Database Link:	NP_776191 Entrez Gene 285753 Human Q8IYX8
Background:	The exact functions of C6orf182 remain unknown.
Synonyms:	bA487F23.2; C6orf182; cep57R
Note:	Rat: 100%; Human: 100%; Mouse: 100%; Dog: 93%; Pig: 93%; Horse: 93%; Bovine: 93%; Rabbit: 93%; Guinea pig: 93%; Yeast: 83%



[View online »](#)

Product images:



WB Suggested Anti-C6orf182 Antibody Titration:
0.2-1 ug/ml; ELISA Titer: 1:312500; Positive
Control: Jurkat cell lysate