

## Product datasheet for TA331422

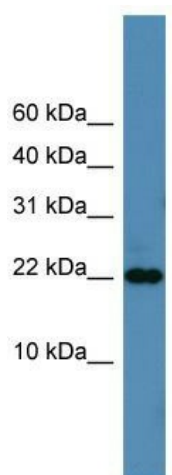
### SFRS12IP1 (SREK1IP1) Rabbit Polyclonal Antibody

#### Product data:

|                         |   |
|-------------------------|---|
| Product Type:           | Primary Antibodies  |
| Applications:           | WB  |
| Recommended Dilution:   | WB  |
| Reactivity:             | Human   |
| Host:                   | Rabbit  |
| Isotype:                | IgG   |
| Clonality:              | Polyclonal  |
| Immunogen:              | The immunogen for anti-SFRS12IP1 antibody: synthetic peptide directed towards the N terminal of human SFRS12IP1. Synthetic peptide located within the following region: GYPGHLTFEARNFLRVDPKRDIVLDVSSTSSSEDSDEENEELNKLQALQEK |
| Formulation:            | Liquid. Purified antibody supplied in 1x PBS buffer with 0.09% (w/v) sodium azide and 2% sucrose.   |
| Purification:           | Affinity Purified   |
| Conjugation:            | Unconjugated  |
| Storage:                | Store at -20°C as received.   |
| Stability:              | Stable for 12 months from date of receipt.  |
| Predicted Protein Size: | 18 kDa  |
| Gene Name:              | SREK1 interacting protein 1   |
| Database Link:          | <a href="#">NP_776190</a><br><a href="#">Entrez Gene 285672 Human</a><br><a href="#">Q8N9Q2</a>   |
| Background:             | SFRS12IP1 is a possible splicing regulator involved in the control of cellular survival.  |
| Synonyms:               | P18SRP; SFRS12IP1   |
| Note:                   | Pig: 100%; Rat: 100%; Human: 100%; Mouse: 100%; Guinea pig: 100%; Dog: 93%; Horse: 93%; Bovine: 93%; Zebrafish: 86%; Yeast: 77%   |



[View online »](#)

**Product images:**

WB Suggested Anti-SFRS12IP1 Antibody Titration:  
0.2-1 ug/ml; ELISA Titer: 1:12500; Positive Control:  
THP-1 cell lysate