

Product datasheet for **TA331421**

COX18 Rabbit Polyclonal Antibody

Product data:

Product Type:	Primary Antibodies
Applications:	WB
Recommended Dilution:	WB
Reactivity:	Human
Host:	Rabbit
Isotype:	IgG
Clonality:	Polyclonal
Immunogen:	The immunogen for anti-COX18 antibody: synthetic peptide directed towards the middle region of human COX18. Synthetic peptide located within the following region: LCSSFVGLSQNLLLRSPGFRQLCRIPSTKSDSETPYKDIFAAFNTKFISR
Formulation:	Liquid. Purified antibody supplied in 1x PBS buffer with 0.09% (w/v) sodium azide and 2% sucrose.
Purification:	Affinity Purified
Conjugation:	Unconjugated
Storage:	Store at -20°C as received.
Stability:	Stable for 12 months from date of receipt.
Predicted Protein Size:	37 kDa
Gene Name:	COX18 cytochrome c oxidase assembly factor
Database Link:	NP_776188 Entrez Gene 285521 Human Q8N8Q8



[View online »](#)

Background:

COX18 is required for the insertion of integral membrane proteins into the mitochondrial inner membrane. COX18 is essential for the activity and assembly of cytochrome c oxidase. COX18 plays a central role in the translocation and export of the C-terminal part of the COX2 protein into the mitochondrial intermembrane space. COX18 encodes a cytochrome c oxidase (COX)-assembly protein. The *S. cerevisiae* Cox18 protein catalyzes the insertion of the Cox2 (MTCO2; MIM 516040) C-terminal tail into the mitochondrial inner membrane, an intermediate step in the assembly of complex IV of the mitochondrial respiratory chain (Sacconi et al., 2005 [PubMed 16212937]). [supplied by OMIM]. PRIMARYREFSEQ_SPAN PRIMARY_IDENTIFIER PRIMARY_SPAN COMP 1-1248 AY957565.1 1-1248 1249-4523 AC095053.3 75071-78345 c

Synonyms:

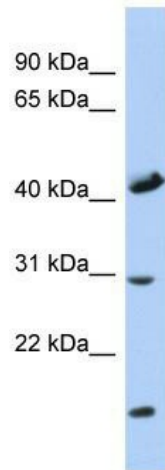
COX18HS

Note:

Human: 100%; Rat: 93%; Pig: 86%; Horse: 86%; Rabbit: 86%; Mouse: 85%; Dog: 79%; Bovine: 79%

Protein Families:

Transmembrane

Product images:

WB Suggested Anti-COX18 Antibody Titration: 0.2-1 ug/ml; ELISA Titer: 1:1562500; Positive Control: Human Muscle