

## Product datasheet for **TA331420**

### COX18 Rabbit Polyclonal Antibody

#### Product data:

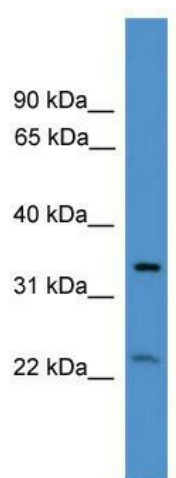
Product Type:	Primary Antibodies
Applications:	WB
Recommended Dilution:	WB
Reactivity:	Human
Host:	Rabbit
Isotype:	IgG
Clonality:	Polyclonal
Immunogen:	The immunogen for anti-COX18 antibody: synthetic peptide directed towards the middle region of human COX18. Synthetic peptide located within the following region: LVWIQLPMWIFMSFALRNLSTGAAHSEGFVQEQQLATGGILWFPDLTAPD
Formulation:	Liquid. Purified antibody supplied in 1x PBS buffer with 0.09% (w/v) sodium azide and 2% sucrose.
Purification:	Affinity Purified
Conjugation:	Unconjugated
Storage:	Store at -20°C as received.
Stability:	Stable for 12 months from date of receipt.
Predicted Protein Size:	37 kDa
Gene Name:	COX18 cytochrome c oxidase assembly factor
Database Link:	<a href="#">NP_776188</a> <a href="#">Entrez Gene 285521 Human</a> <a href="#">Q8N8Q8</a>
Background:	COX18 is required for the insertion of integral membrane proteins into the mitochondrial inner membrane. COX18 is essential for the activity and assembly of cytochrome c oxidase. COX18 plays a central role in the translocation and export of the C-terminal part of the COX2 protein into the mitochondrial intermembrane space.
Synonyms:	COX18HS
Note:	Dog: 100%; Human: 100%; Pig: 93%; Rat: 93%; Horse: 93%; Bovine: 93%; Guinea pig: 93%; Rabbit: 86%; Mouse: 79%



[View online »](#)

Protein Families: Transmembrane

### Product images:



WB Suggested Anti-COX18 Antibody Titration: 0.2-1 ug/ml; ELISA Titer: 1:62500; Positive Control: ACHN cell lysate