

## Product datasheet for **TA331419**

### DPY19L2 Rabbit Polyclonal Antibody

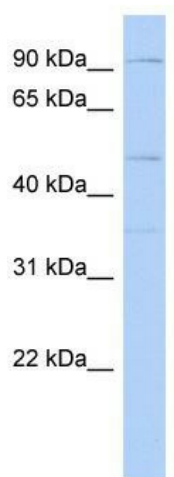
#### Product data:

Product Type:	Primary Antibodies
Applications:	WB
Recommended Dilution:	WB
Reactivity:	Human
Host:	Rabbit
Isotype:	IgG
Clonality:	Polyclonal
Immunogen:	The immunogen for anti-DPY19L2 antibody: synthetic peptide directed towards the middle region of human DPY19L2. Synthetic peptide located within the following region: IIGEFNNLPQEELLQWIKYSTTSDAVFAGAMPTMASIKLSTLHPIVNHHPH
Formulation:	Liquid. Purified antibody supplied in 1x PBS buffer with 0.09% (w/v) sodium azide and 2% sucrose.
Purification:	Affinity Purified
Conjugation:	Unconjugated
Storage:	Store at -20°C as received.
Stability:	Stable for 12 months from date of receipt.
Predicted Protein Size:	87 kDa
Gene Name:	dpy-19 like 2
Database Link:	<a href="#">NP_776173</a> <a href="#">Entrez Gene 283417 Human</a> <a href="#">Q6NUT2</a>
Background:	The exact functions of DPY19L2 remain unknown.
Synonyms:	SPATA34; SPGF9
Note:	Rat: 100%; Human: 100%; Dog: 93%; Pig: 93%; Horse: 93%; Mouse: 93%; Bovine: 93%; Rabbit: 93%; Guinea pig: 93%
Protein Families:	Transmembrane



[View online »](#)

## Product images:



WB Suggested Anti-DPY19L2 Antibody Titration:  
0.2-1 ug/ml; ELISA Titer: 1:312500; Positive  
Control: Human heart