

Product datasheet for **TA331416**

NEGR1 Rabbit Polyclonal Antibody

Product data:

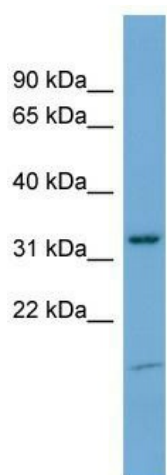
Product Type:	Primary Antibodies
Applications:	WB
Recommended Dilution:	WB
Reactivity:	Human
Host:	Rabbit
Isotype:	IgG
Clonality:	Polyclonal
Immunogen:	The immunogen for anti-NEGR1 antibody: synthetic peptide directed towards the N terminal of human NEGR1. Synthetic peptide located within the following region: WLNRSSIIFAGGDKWSVDPRVSISTLNKRDSLQIQNVDTDDGPYTCSV
Formulation:	Liquid. Purified antibody supplied in 1x PBS buffer with 0.09% (w/v) sodium azide and 2% sucrose. <i>Note that this product is shipped as lyophilized powder to China customers.</i>
Purification:	Affinity Purified
Conjugation:	Unconjugated
Storage:	Store at -20°C as received.
Stability:	Stable for 12 months from date of receipt.
Predicted Protein Size:	39 kDa
Gene Name:	neuronal growth regulator 1
Database Link:	NP_776169 Entrez Gene 257194 Human Q7Z3B1
Background:	NEGR1 may be involved in cell-adhesion. NEGR1 may function as a trans-neural growth-promoting factor in regenerative axon sprouting in the mammalian brain.
Synonyms:	DMML2433; IGLON4; KILON; Ntra
Note:	Dog: 100%; Pig: 100%; Rat: 100%; Horse: 100%; Human: 100%; Mouse: 100%; Rabbit: 100%; Guinea pig: 100%



[View online »](#)

Protein Pathways: Cell adhesion molecules (CAMs)

Product images:



WB Suggested Anti-NEGR1 Antibody Titration:
0.2-1 ug/ml; ELISA Titer: 1:62500; Positive Control:
HepG2 cell lysate