

Product datasheet for **TA331415**

C16orf65 (PDZD9) Rabbit Polyclonal Antibody

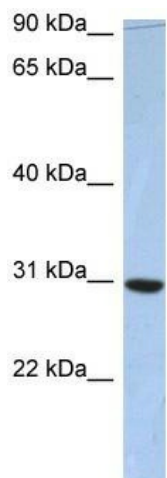
Product data:

Product Type:	Primary Antibodies
Applications:	WB
Recommended Dilution:	WB
Reactivity:	Human
Host:	Rabbit
Isotype:	IgG
Clonality:	Polyclonal
Immunogen:	The immunogen for anti-C16orf65 antibody: synthetic peptide directed towards the middle region of human C16orf65. Synthetic peptide located within the following region: TSTPKKIELAKDESFTSSDDNENVLDLKRLLQYYRYPWSTVHHHPARRPISI
Formulation:	Liquid. Purified antibody supplied in 1x PBS buffer with 0.09% (w/v) sodium azide and 2% sucrose.
Purification:	Affinity Purified
Conjugation:	Unconjugated
Storage:	Store at -20°C as received.
Stability:	Stable for 12 months from date of receipt.
Predicted Protein Size:	23 kDa
Gene Name:	PDZ domain containing 9
Database Link:	NP_776167 Entrez Gene 255762 Human Q8IXQ8
Background:	The specific function of the protein remains unknown.
Synonyms:	C16orf65
Note:	Human: 100%; Rabbit: 92%; Dog: 77%; Rat: 77%



[View online »](#)

Product images:



WB Suggested Anti-C16orf65 Antibody Titration:
0.2-1 ug/ml; ELISA Titer: 1:12500; Positive Control:
Human Small Intestine