

## Product datasheet for **TA331414**

### MPV17L Rabbit Polyclonal Antibody

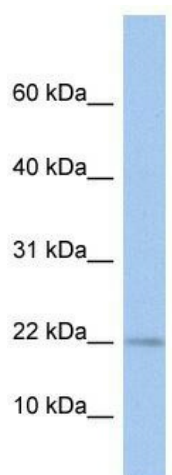
#### Product data:

Product Type:	Primary Antibodies
Applications:	WB
Recommended Dilution:	WB
Reactivity:	Human
Host:	Rabbit
Isotype:	IgG
Clonality:	Polyclonal
Immunogen:	The immunogen for anti-MPV17L antibody: synthetic peptide directed towards the N terminal of human MPV17L. Synthetic peptide located within the following region: MAGWWPALSRAARRHPWPTNVLLYGSLVSAGDALQURLQGREALNWRQTRR
Formulation:	Liquid. Purified antibody supplied in 1x PBS buffer with 0.09% (w/v) sodium azide and 2% sucrose. <i>Note that this product is shipped as lyophilized powder to China customers.</i>
Purification:	Affinity Purified
Conjugation:	Unconjugated
Storage:	Store at -20°C as received.
Stability:	Stable for 12 months from date of receipt.
Predicted Protein Size:	17 kDa
Gene Name:	MPV17 mitochondrial inner membrane protein like
Database Link:	<a href="#">NP_776164</a> <a href="#">Entrez Gene 255027 Human</a> <a href="#">Q2QL34</a>
Background:	Isoform 1 participates in reactive oxygen species metabolism by up- or down-regulation of the genes of antioxidant enzymes.
Synonyms:	M-LPH; MLPH1; MLPH2; MPV17L1
Note:	Pig: 100%; Human: 100%; Guinea pig: 100%



[View online »](#)

## Product images:



WB Suggested Anti-MPV17L Antibody Titration:  
0.2-1 ug/ml; ELISA Titer: 1:312500; Positive  
Control: THP-1 cell lysate