

Product datasheet for **TA331410**

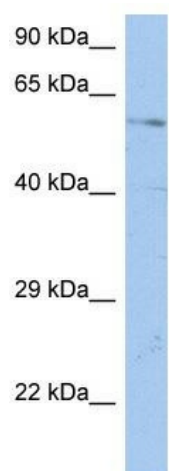
DCBLD1 Rabbit Polyclonal Antibody

Product data:

Product Type:	Primary Antibodies
Applications:	WB
Recommended Dilution:	WB
Reactivity:	Human
Host:	Rabbit
Isotype:	IgG
Clonality:	Polyclonal
Immunogen:	The immunogen for anti-DCBLD1 antibody: synthetic peptide directed towards the N terminal of human DCBLD1. Synthetic peptide located within the following region: TITVPKGKRLILRLGDLIDIESQTCASDYLLFTSSSDQYGPYCGSMTVPKE
Formulation:	Liquid. Purified antibody supplied in 1x PBS buffer with 0.09% (w/v) sodium azide and 2% sucrose. <i>Note that this product is shipped as lyophilized powder to China customers.</i>
Purification:	Affinity Purified
Conjugation:	Unconjugated
Storage:	Store at -20°C as received.
Stability:	Stable for 12 months from date of receipt.
Predicted Protein Size:	59 kDa
Gene Name:	discoidin, CUB and LCCL domain containing 1
Database Link:	NP_775945 Entrez Gene 285761 Human Q8N8Z6
Background:	The specific function of the protein remains unknown.
Synonyms:	dj94G16.1
Note:	Pig: 100%; Rat: 100%; Horse: 100%; Human: 100%; Mouse: 100%; Bovine: 100%; Dog: 93%; Rabbit: 93%; Guinea pig: 85%
Protein Families:	Transmembrane



[View online »](#)

Product images:

WB Suggested Anti-DCBLD1 Antibody Titration:
0.2-1 ug/ml; ELISA Titer: 1:62500; Positive Control:
OVCAR-3 cell lysate