

Product datasheet for **TA331407**

KIAA0825 Rabbit Polyclonal Antibody

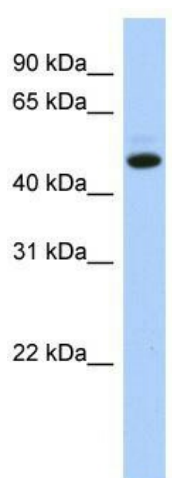
Product data:

Product Type:	Primary Antibodies
Applications:	WB
Recommended Dilution:	WB
Reactivity:	Human
Host:	Rabbit
Isotype:	IgG
Clonality:	Polyclonal
Immunogen:	The immunogen for anti-C5orf36 antibody: synthetic peptide directed towards the N terminal of human C5orf36. Synthetic peptide located within the following region: CFEWLTNYNYSTSESSFISHGDLIKFFKTLQDLLKNEQNQEEMTLDLLWD
Formulation:	Liquid. Purified antibody supplied in 1x PBS buffer with 0.09% (w/v) sodium azide and 2% sucrose.
Purification:	Affinity Purified
Conjugation:	Unconjugated
Storage:	Store at -20°C as received.
Stability:	Stable for 12 months from date of receipt.
Predicted Protein Size:	37 kDa
Gene Name:	KIAA0825
Database Link:	NP_775936 Entrez Gene 285600 Human Q8IV33
Background:	The specific function of C5orf36 is not yet known.
Synonyms:	C5orf36
Note:	Pig: 100%; Horse: 100%; Human: 100%; Yeast: 100%; Dog: 93%; Guinea pig: 93%; Bovine: 86%; Rat: 79%; Rabbit: 77%



[View online »](#)

Product images:



WB Suggested Anti-C5orf36 Antibody Titration:
0.2-1 ug/ml; ELISA Titer: 1:1562500; Positive
Control: Hela cell lysate