

## Product datasheet for **TA331406**

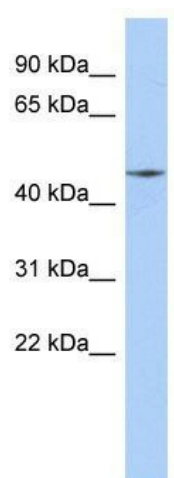
### **FAM80A (RIMKLA) Rabbit Polyclonal Antibody**

#### **Product data:**

Product Type:	Primary Antibodies
Applications:	WB
Recommended Dilution:	WB
Reactivity:	Human
Host:	Rabbit
Isotype:	IgG
Clonality:	Polyclonal
Immunogen:	The immunogen for anti-FAM80A antibody: synthetic peptide directed towards the middle region of human FAM80A. Synthetic peptide located within the following region: EAEPLGYPVVKSTRGHRGKAVFLARDKHHLSDICHLIRHDPYLFQKYV
Formulation:	Liquid. Purified antibody supplied in 1x PBS buffer with 0.09% (w/v) sodium azide and 2% sucrose.
Purification:	Affinity Purified
Conjugation:	Unconjugated
Storage:	Store at -20°C as received.
Stability:	Stable for 12 months from date of receipt.
Predicted Protein Size:	38 kDa
Gene Name:	ribosomal modification protein rimK-like family member A
Database Link:	<a href="#">NP_775913</a> <a href="#">Entrez Gene 284716 Human</a> <a href="#">Q8IXN7</a>
Background:	The specific function of FAM80A is not yet known.
Synonyms:	FAM80A; NAAGS; NAAGS-II
Note:	Dog: 100%; Pig: 100%; Rat: 100%; Human: 100%; Mouse: 100%; Bovine: 100%; Rabbit: 100%; Horse: 93%; Zebrafish: 86%; Guinea pig: 86%



[View online »](#)

**Product images:**

WB Suggested Anti-FAM80A Antibody Titration:  
0.2-1 ug/ml; ELISA Titer: 1:312500; Positive  
Control: MCF7 cell lysate