

## Product datasheet for **TA331405**

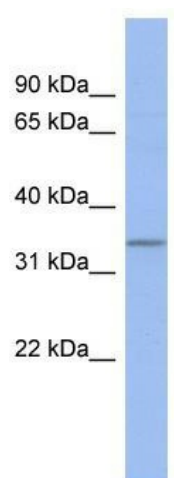
### C17orf78 Rabbit Polyclonal Antibody

#### Product data:

Product Type:	Primary Antibodies
Applications:	WB
Recommended Dilution:	WB
Reactivity:	Human
Host:	Rabbit
Isotype:	IgG
Clonality:	Polyclonal
Immunogen:	The immunogen for anti-C17orf78 antibody: synthetic peptide directed towards the middle region of human C17orf78. Synthetic peptide located within the following region: LGARKLCQCQWLWRWQKKGGQPPGTAESKPDSQPQKVGQDAANSSNPKKA
Formulation:	Liquid. Purified antibody supplied in 1x PBS buffer with 0.09% (w/v) sodium azide and 2% sucrose. <i>Note that this product is shipped as lyophilized powder to China customers.</i>
Purification:	Affinity Purified
Conjugation:	Unconjugated
Storage:	Store at -20°C as received.
Stability:	Stable for 12 months from date of receipt.
Predicted Protein Size:	30 kDa
Gene Name:	chromosome 17 open reading frame 78
Database Link:	<a href="#">NP_775896</a> <a href="#">Entrez Gene 284099 Human</a> <a href="#">Q8N4C9</a>
Background:	The exact function of the protein encoded by this gene is not known.
Synonyms:	FLJ39647; MGC34759
Note:	Human: 100%
Protein Families:	Transmembrane



[View online »](#)

**Product images:**

WB Suggested Anti-C17orf78 Antibody Titration:  
0.2-1 ug/ml; ELISA Titer: 1:62500; Positive Control:  
Jurkat cell lysate