

Product datasheet for **TA331402**

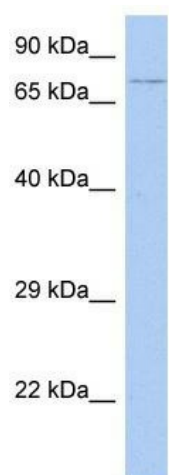
HEXD Rabbit Polyclonal Antibody

Product data:

Product Type:	Primary Antibodies
Applications:	WB
Recommended Dilution:	WB
Reactivity:	Human
Host:	Rabbit
Isotype:	IgG
Clonality:	Polyclonal
Immunogen:	The immunogen for anti-HEXDC antibody: synthetic peptide directed towards the middle region of human HEXDC. Synthetic peptide located within the following region: CQMAWAIRAHVGVVPSGPAVSCPHSVPEGPGQLGERLENTEGSSTGRPA
Formulation:	Liquid. Purified antibody supplied in 1x PBS buffer with 0.09% (w/v) sodium azide and 2% sucrose. <i>Note that this product is shipped as lyophilized powder to China customers.</i>
Purification:	Affinity Purified
Conjugation:	Unconjugated
Storage:	Store at -20°C as received.
Stability:	Stable for 12 months from date of receipt.
Predicted Protein Size:	63 kDa
Gene Name:	hexosaminidase D
Database Link:	NP_775891 Entrez Gene 284004 Human Q8WVB3
Background:	HEXDC has hexosaminidase activity.
Synonyms:	FLJ23825
Note:	Human: 100%



[View online »](#)

Product images:

WB Suggested Anti-HEXDC Antibody Titration:
0.2-1 ug/ml; ELISA Titer: 1:12500; Positive Control:
SH-SY5Y cell lysate