

## Product datasheet for **TA331400**

### **FAM98B Rabbit Polyclonal Antibody**

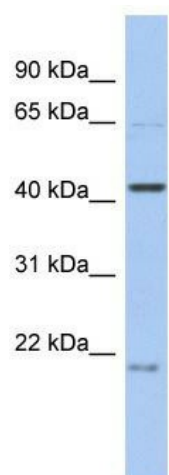
#### **Product data:**

Product Type:	Primary Antibodies
Applications:	WB
Recommended Dilution:	WB
Reactivity:	Human
Host:	Rabbit
Isotype:	IgG
Clonality:	Polyclonal
Immunogen:	The immunogen for anti-FAM98B antibody: synthetic peptide directed towards the N terminal of human FAM98B. Synthetic peptide located within the following region: LTAAEGGLSSPEFSELCIWLGSQIKSLCNLEESITSAGRDDLESFQLEI
Formulation:	Liquid. Purified antibody supplied in 1x PBS buffer with 0.09% (w/v) sodium azide and 2% sucrose.
Purification:	Affinity Purified
Conjugation:	Unconjugated
Storage:	Store at -20°C as received.
Stability:	Stable for 12 months from date of receipt.
Predicted Protein Size:	45 kDa
Gene Name:	family with sequence similarity 98 member B
Database Link:	<a href="#">NP_775882</a> <a href="#">Entrez Gene 283742 Human</a> <a href="#">Q52LJ0</a>
Background:	The specific function of FAM98B is not yet known.
Synonyms:	FLJ38426
Note:	Dog: 100%; Rat: 100%; Human: 100%; Mouse: 100%; Pig: 93%; Bovine: 93%; Rabbit: 93%; Guinea pig: 93%



[View online »](#)

## Product images:



WB Suggested Anti-FAM98B Antibody Titration:  
0.2-1 ug/ml; ELISA Titer: 1:1562500; Positive  
Control: Human Spleen