

Product datasheet for **TA331399**

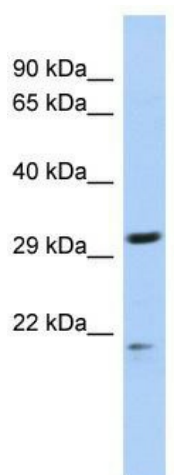
TEDC1 Rabbit Polyclonal Antibody

Product data:

| | |
|-------------------------|--|
| Product Type: | Primary Antibodies |
| Applications: | WB |
| Recommended Dilution: | WB |
| Reactivity: | Human |
| Host: | Rabbit |
| Isotype: | IgG |
| Clonality: | Polyclonal |
| Immunogen: | The immunogen for anti-C14orf80 antibody: synthetic peptide directed towards the n terminal of human C14orf80. Synthetic peptide located within the following region: MLAQARVPLGDGMTVCQIHLYTRGCHSDQSLSHLSVTEAEMLRDPEGGQQ |
| Formulation: | Liquid. Purified antibody supplied in 1x PBS buffer with 0.09% (w/v) sodium azide and 2% sucrose. |
| Purification: | Affinity Purified |
| Conjugation: | Unconjugated |
| Storage: | Store at -20°C as received. |
| Stability: | Stable for 12 months from date of receipt. |
| Predicted Protein Size: | 28 kDa |
| Gene Name: | chromosome 14 open reading frame 80 |
| Database Link: | NP_001128347 Entrez Gene 283643 Human Q86SX3 |
| Background: | The specific function of C14orf80 is not yet known. |
| Synonyms: | MGC16771 |
| Note: | Human: 100%; Horse: 86%; Pig: 79%; Rat: 79%; Bovine: 79%; Guinea pig: 79% |



[View online »](#)

Product images:

WB Suggested Anti-C14orf80 Antibody Titration:
0.2-1 ug/ml; ELISA Titer: 1:1562500; Positive
Control: Jurkat cell lysate