

## Product datasheet for **TA331397**

### STK32C Rabbit Polyclonal Antibody

#### Product data:

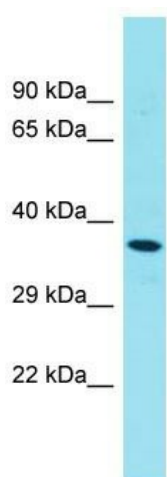
Product Type:	Primary Antibodies
Applications:	WB
Recommended Dilution:	WB
Reactivity:	Human
Host:	Rabbit
Isotype:	IgG
Clonality:	Polyclonal
Immunogen:	The immunogen for Anti-STK32A antibody is: synthetic peptide directed towards the N-terminal region of Human STK32A. Synthetic peptide located within the following region: PVFDENEDVNFDFHEILRAIGKGSFGKVCIVQKNDTKKMYAMKYMNKQKC
Formulation:	Liquid. Purified antibody supplied in 1x PBS buffer with 0.09% (w/v) sodium azide and 2% sucrose. <i>Note that this product is shipped as lyophilized powder to China customers.</i>
Purification:	Affinity Purified
Conjugation:	Unconjugated
Storage:	Store at -20°C as received.
Stability:	Stable for 12 months from date of receipt.
Predicted Protein Size:	39 kDa
Gene Name:	serine/threonine kinase 32C
Database Link:	<a href="#">NP_775846</a> <a href="#">Entrez Gene 282974 Human</a> <a href="#">Q86UX6</a>
Background:	STK32A belongs to the protein kinase superfamily, Ser/Thr protein kinase family. It contains 1 protein kinase domain. The function of the STK32A protein remains unknown.
Synonyms:	PKE; YANK3
Note:	Pig: 100%; Rat: 100%; Human: 100%; Mouse: 100%; Guinea pig: 100%; Horse: 85%; Rabbit: 85%; Dog: 77%; Bovine: 77%



[View online »](#)

Protein Families: Druggable Genome, Protein Kinase

### Product images:



Host: Rabbit

Target Name: STK32A

Sample Tissue: Thyroid Tumor Lysate

Antibody Dilution: 1.0 $\mu$ g/ml

Host: Rabbit; Target Name: STK32A; Sample Tissue: Thyroid Tumor lysates; Antibody Dilution: 1.0ug/ml