

## Product datasheet for **TA331395**

### ABHD7 (EPHX4) Rabbit Polyclonal Antibody

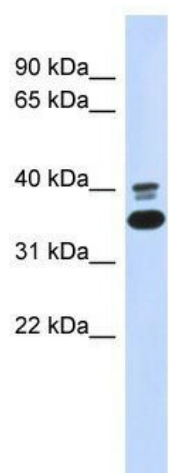
#### Product data:

Product Type:	Primary Antibodies
Applications:	WB
Recommended Dilution:	WB
Reactivity:	Human
Host:	Rabbit
Isotype:	IgG
Clonality:	Polyclonal
Immunogen:	The immunogen for anti-ABHD7 antibody: synthetic peptide directed towards the N terminal of human ABHD7. Synthetic peptide located within the following region: HCYVRIKDSGLRFHYVAAGERGKPLMLLLHGFPEFWYSWRYQLREFKSEY
Formulation:	Liquid. Purified antibody supplied in 1x PBS buffer with 0.09% (w/v) sodium azide and 2% sucrose. <i>Note that this product is shipped as lyophilized powder to China customers.</i>
Purification:	Affinity Purified
Conjugation:	Unconjugated
Storage:	Store at -20°C as received.
Stability:	Stable for 12 months from date of receipt.
Predicted Protein Size:	42 kDa
Gene Name:	epoxide hydrolase 4
Database Link:	<a href="#">NP_775838</a> <a href="#">Entrez Gene 253152 Human</a> <a href="#">Q8IUS5</a>
Background:	The specific function of ABHD7 is not yet known.
Synonyms:	ABHD7; EH4; EPHXRP
Note:	Dog: 100%; Pig: 100%; Rat: 100%; Human: 100%; Mouse: 100%; Bovine: 100%; Rabbit: 100%; Guinea pig: 100%; Zebrafish: 93%
Protein Families:	Protease, Transmembrane



[View online »](#)

## Product images:



WB Suggested Anti-ABHD7 Antibody Titration:  
0.2-1 ug/ml; ELISA Titer: 1:1562500; Positive  
Control: 293T cell lysate