

## Product datasheet for **TA331391**

### DACT3 Rabbit Polyclonal Antibody

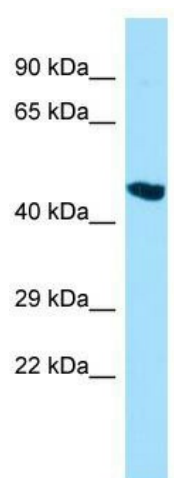
#### Product data:

Product Type:	Primary Antibodies
Applications:	WB
Recommended Dilution:	WB
Reactivity:	Human
Host:	Rabbit
Isotype:	IgG
Clonality:	Polyclonal
Immunogen:	The immunogen for Anti-DACT3 antibody is: synthetic peptide directed towards the C-terminal region of Human DACT3. Synthetic peptide located within the following region: AAGRRGRMAEASGRRGSPRARKASRSQSETLLGRASAVPSGPPKYPTAE
Formulation:	Liquid. Purified antibody supplied in 1x PBS buffer with 0.09% (w/v) sodium azide and 2% sucrose. <i>Note that this product is shipped as lyophilized powder to China customers.</i>
Conjugation:	Unconjugated
Storage:	Store at -20°C as received.
Stability:	Stable for 12 months from date of receipt.
Predicted Protein Size:	41 kDa
Gene Name:	dishevelled binding antagonist of beta catenin 3
Database Link:	<a href="#">NP_659493</a> <a href="#">Entrez Gene 147906 Human</a> <a href="#">Q96B18</a>
Background:	The function of this protein remains unknown.
Synonyms:	DAPPER3; RRR1
Note:	Pig: 100%; Human: 100%; Rat: 93%; Mouse: 93%



[View online »](#)

## Product images:



WB Suggested Anti-DACT3 Antibody; Titration: 1.0 ug/ml; Positive Control: MCF7 Whole Cell