

Product datasheet for **TA331390**

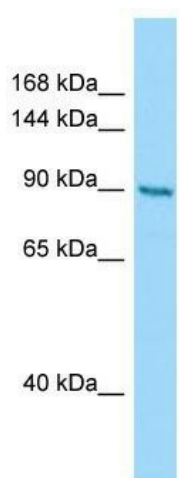
CSPP1 Rabbit Polyclonal Antibody

Product data:

Product Type:	Primary Antibodies
Applications:	WB
Recommended Dilution:	WB
Reactivity:	Human
Host:	Rabbit
Isotype:	IgG
Clonality:	Polyclonal
Immunogen:	The immunogen for Anti-CSPP1 antibody is: synthetic peptide directed towards the N-terminal region of Human CSPP1. Synthetic peptide located within the following region: AEDKAELESDPPYMEMKGLSAKLENSKILISMAKENIPPNSQQTRGSL
Formulation:	Liquid. Purified antibody supplied in 1x PBS buffer with 0.09% (w/v) sodium azide and 2% sucrose.
Conjugation:	Unconjugated
Storage:	Store at -20°C as received.
Stability:	Stable for 12 months from date of receipt.
Predicted Protein Size:	96 kDa
Gene Name:	centrosome and spindle pole associated protein 1
Database Link:	NP_079066 Entrez Gene 79848 Human Q1MSJ5
Background:	CSPP1 interacts with centrosomes and microtubules and plays a role in cell-cycle progression and spindle organization.
Synonyms:	CSPP; JBTS21
Note:	Rat: 100%; Horse: 100%; Human: 100%; Bovine: 100%; Rabbit: 100%; Pig: 93%; Guinea pig: 93%; Mouse: 90%; Dog: 86%



[View online »](#)

Product images:

Host: Rabbit; Target Name: CSPP1; Sample
Tissue: PANC1 Whole Cell lysates; Antibody
Dilution: 1.0ug/ml