

## Product datasheet for TA331387

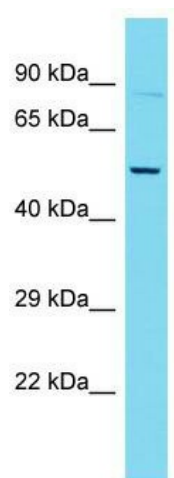
### Coro1c Rabbit Polyclonal Antibody

#### Product data:

Product Type:	Primary Antibodies
Applications:	WB
Recommended Dilution:	WB
Reactivity:	Mouse
Host:	Rabbit
Isotype:	IgG
Clonality:	Polyclonal
Immunogen:	The immunogen for Anti-Coro1c antibody is: synthetic peptide directed towards the C-terminal region of Mouse Coro1c. Synthetic peptide located within the following region: ELSCAPKKPTDTASVQNEAKLDEILKEIKSIKETICSQDERISKLEQQLA
Formulation:	Liquid. Purified antibody supplied in 1x PBS buffer with 0.09% (w/v) sodium azide and 2% sucrose. <i>Note that this product is shipped as lyophilized powder to China customers.</i>
Conjugation:	Unconjugated
Storage:	Store at -20°C as received.
Stability:	Stable for 12 months from date of receipt.
Predicted Protein Size:	53 kDa
Gene Name:	coronin, actin binding protein 1C
Database Link:	<a href="#">NP_035909</a> <a href="#">Entrez Gene 23790 Mouse</a> <a href="#">Q9WUM4</a>
Background:	Coro1c may be involved in cytokinesis, motility, and signal transduction.
Synonyms:	Coronin-3; CRNN4; HCRNN4
Note:	Dog: 100%; Pig: 100%; Rat: 100%; Horse: 100%; Human: 100%; Bovine: 100%; Rabbit: 93%; Guinea pig: 93%; Mouse: 86%



[View online »](#)

**Product images:**

Host: Rabbit; Target Name: Coro1c; Sample  
Tissue: Mouse Thymus lysates; Antibody Dilution:  
1.0ug/ml