

## Product datasheet for **TA331386**

### Coronin 3 (CORO1C) Rabbit Polyclonal Antibody

#### Product data:

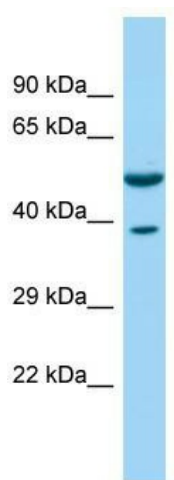
Product Type:	Primary Antibodies
Applications:	WB
Recommended Dilution:	WB
Reactivity:	Human
Host:	Rabbit
Isotype:	IgG
Clonality:	Polyclonal
Immunogen:	The immunogen for Anti-CORO1C antibody is: synthetic peptide directed towards the C-terminal region of Human CORO1C. Synthetic peptide located within the following region: LKVVKKNILDSKPTANKKCDLISIPKKTDTASVQNEAKLDEILKEIKSI
Formulation:	Liquid. Purified antibody supplied in 1x PBS buffer with 0.09% (w/v) sodium azide and 2% sucrose. <i>Note that this product is shipped as lyophilized powder to China customers.</i>
Conjugation:	Unconjugated
Storage:	Store at -20°C as received.
Stability:	Stable for 12 months from date of receipt.
Predicted Protein Size:	53 kDa
Gene Name:	coronin 1C
Database Link:	<a href="#">NP_055140</a> <a href="#">Entrez Gene 23603 Human</a> <a href="#">Q9ULV4</a>
Background:	This gene encodes a member of the WD repeat protein family. WD repeats are minimally conserved regions of approximately 40 amino acids typically bracketed by gly-his and trp-aspartic acid (GH-WD), which may facilitate formation of heterotrimeric or multiprotein complexes. Members of this family are involved in a variety of cellular processes, including cell cycle progression, signal transduction, apoptosis, and gene regulation.
Synonyms:	HCRNN4



[View online »](#)

**Note:** Rat: 100%; Human: 100%; Dog: 93%; Pig: 93%; Horse: 93%; Mouse: 93%; Guinea pig: 93%;  
Rabbit: 86%; Bovine: 79%

### Product images:



WB Suggested Anti-CORO1C Antibody; Titration:  
1.0 ug/ml; Positive Control: Fetal Brain