

Product datasheet for **TA331385**

CILP2 Rabbit Polyclonal Antibody

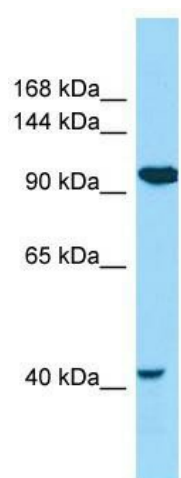
Product data:

| | |
|-------------------------|---|
| Product Type: | Primary Antibodies |
| Applications: | WB |
| Recommended Dilution: | WB |
| Reactivity: | Human |
| Host: | Rabbit |
| Isotype: | IgG |
| Clonality: | Polyclonal |
| Immunogen: | The immunogen for Anti-CILP2 antibody is: synthetic peptide directed towards the N-terminal region of Human CILP2. Synthetic peptide located within the following region: RVHLNPTRGFWCLNREQPRGRRCSNYHVRFRCPLEASWGAWGPWGPCSGS |
| Formulation: | Liquid. Purified antibody supplied in 1x PBS buffer with 0.09% (w/v) sodium azide and 2% sucrose. <i>Note that this product is shipped as lyophilized powder to China customers.</i> |
| Conjugation: | Unconjugated |
| Storage: | Store at -20°C as received. |
| Stability: | Stable for 12 months from date of receipt. |
| Predicted Protein Size: | 127 kDa |
| Gene Name: | cartilage intermediate layer protein 2 |
| Database Link: | NP_694953 Entrez Gene 148113 Human Q8IUL8 |
| Background: | CILP2 may play a role in cartilage scaffolding. |
| Synonyms: | CLIP-2 |
| Note: | Dog: 100%; Pig: 100%; Rat: 100%; Horse: 100%; Human: 100%; Mouse: 100%; Bovine: 100%; Guinea pig: 100%; Zebrafish: 77% |



[View online »](#)

Product images:



WB Suggested Anti-CILP2 Antibody; Titration: 1.0 ug/ml; Positive Control: COLO205 Whole Cell