

## Product datasheet for **TA331383**

### CHID1 Rabbit Polyclonal Antibody

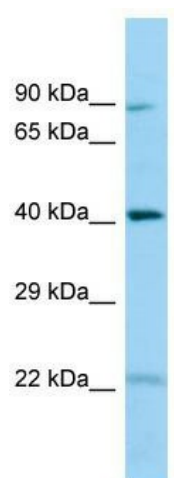
#### Product data:

Product Type:	Primary Antibodies
Applications:	WB
Recommended Dilution:	WB
Reactivity:	Human
Host:	Rabbit
Isotype:	IgG
Clonality:	Polyclonal
Immunogen:	The immunogen for Anti-CHID1 antibody is: synthetic peptide directed towards the N-terminal region of Human CHID1. Synthetic peptide located within the following region: CSPVHTTLSKSDAKKAASKTLLEKSQFSDKPVQDRGLVVTDLKAESVLE
Formulation:	Liquid. Purified antibody supplied in 1x PBS buffer with 0.09% (w/v) sodium azide and 2% sucrose. <i>Note that this product is shipped as lyophilized powder to China customers.</i>
Conjugation:	Unconjugated
Storage:	Store at -20°C as received.
Stability:	Stable for 12 months from date of receipt.
Predicted Protein Size:	39 kDa
Gene Name:	chitinase domain containing 1
Database Link:	<a href="#">NP_001136149</a> <a href="#">Entrez Gene 66005 Human</a> <a href="#">Q9BWS9</a>
Background:	CHID1 is a saccharide- and LPS-binding protein with possible roles in pathogen sensing and endotoxin neutralization. Ligand-binding specificity relates to the length of the oligosaccharides, with preference for chitotetraose (in vitro).
Synonyms:	GL008; SI-CLP; SICLP
Note:	Human: 100%; Rat: 93%; Horse: 93%; Mouse: 93%; Dog: 86%; Pig: 79%; Rabbit: 79%; Guinea pig: 79%



[View online »](#)

## Product images:



WB Suggested Anti-CHID1 Antibody; Titration: 1.0 ug/ml; Positive Control: Placenta