

Product datasheet for TA331382

CEP63 Rabbit Polyclonal Antibody

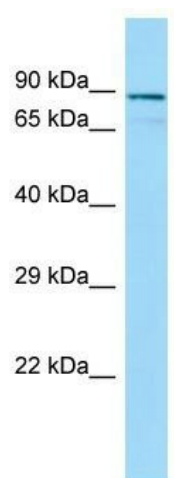
Product data:

Product Type:	Primary Antibodies
Applications:	WB
Recommended Dilution:	WB
Reactivity:	Human
Host:	Rabbit
Isotype:	IgG
Clonality:	Polyclonal
Immunogen:	The immunogen for Anti-CEP63 antibody is: synthetic peptide directed towards the N-terminal region of Human CEP63. Synthetic peptide located within the following region: YEKLQKKQMREFRGNTKNHREDRSEIERLTAKIEEFRQKSLDWEKQRLIY
Formulation:	Liquid. Purified antibody supplied in 1x PBS buffer with 0.09% (w/v) sodium azide and 2% sucrose. <i>Note that this product is shipped as lyophilized powder to China customers.</i>
Conjugation:	Unconjugated
Storage:	Store at -20°C as received.
Stability:	Stable for 12 months from date of receipt.
Predicted Protein Size:	77 kDa
Gene Name:	centrosomal protein 63
Database Link:	NP_001035842 Entrez Gene 80254 Human Q96MT8
Background:	This gene encodes a protein with six coiled-coil domains. The protein is localized to the centrosome, a non-membraneous organelle that functions as the major microtubule-organizing center in animal cells. Several alternatively spliced transcript variants have been found, but their biological validity has not been determined.
Synonyms:	SCKL6
Note:	Pig: 100%; Human: 100%; Dog: 93%; Bovine: 93%; Rat: 86%; Horse: 86%; Mouse: 86%; Rabbit: 86%; Guinea pig: 86%



[View online »](#)

Product images:



WB Suggested Anti-CEP63 Antibody; Titration: 1.0 ug/ml; Positive Control: Fetal Kidney