

Product datasheet for TA331381

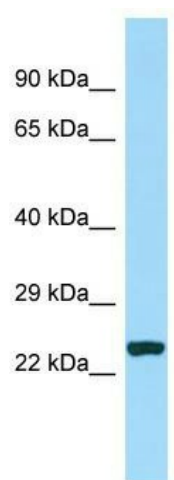
CDCA7 Rabbit Polyclonal Antibody

Product data:

Product Type:	Primary Antibodies
Applications:	WB
Recommended Dilution:	WB
Reactivity:	Human
Host:	Rabbit
Isotype:	IgG
Clonality:	Polyclonal
Immunogen:	The immunogen for Anti-CDCA7 antibody is: synthetic peptide directed towards the N-terminal region of Human CDCA7. Synthetic peptide located within the following region: CRTRSQCRHSGPLRVAMKFPARSTRGATNKKAESRQPSENSVTDSNSDSE
Formulation:	Liquid. Purified antibody supplied in 1x PBS buffer with 0.09% (w/v) sodium azide and 2% sucrose.
Purification:	Affinity Purified
Conjugation:	Unconjugated
Storage:	Store at -20°C as received.
Stability:	Stable for 12 months from date of receipt.
Predicted Protein Size:	22 kDa
Gene Name:	cell division cycle associated 7
Database Link:	NP_665809 Entrez Gene 83879 Human Q9BWT1
Background:	This gene was identified as a c-Myc responsive gene, and behaves as a direct c-Myc target gene. Overexpression of this gene is found to enhance the transformation of lymphoblastoid cells, and it complements a transformation-defective Myc Box II mutant, suggesting its involvement in c-Myc-mediated cell transformation. Two alternatively spliced transcript variants encoding distinct isoforms have been reported.
Synonyms:	JPO1
Note:	Human: 100%


[View online »](#)

Product images:



Host: Rabbit; Target Name: CDCA7; Sample
Tissue: MCF7 Whole Cell lysates; Antibody
Dilution: 1.0ug/ml