

## Product datasheet for **TA331380**

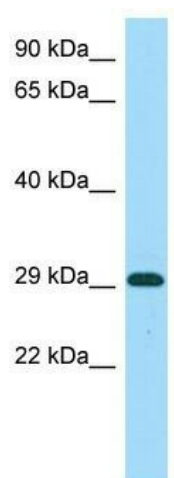
### CBARA1 (MICU1) Rabbit Polyclonal Antibody

#### Product data:

Product Type:	Primary Antibodies
Applications:	WB
Recommended Dilution:	WB
Reactivity:	Human
Host:	Rabbit
Isotype:	IgG
Clonality:	Polyclonal
Immunogen:	The immunogen for Anti-MICU1 antibody is: synthetic peptide directed towards the C-terminal region of Human MICU1. Synthetic peptide located within the following region: LSDHVCDVWFALFDCDGNGLSNKEFVSIMKQRLMRGLEKPKDMGFTRLM
Formulation:	Liquid. Purified antibody supplied in 1x PBS buffer with 0.09% (w/v) sodium azide and 2% sucrose. <i>Note that this product is shipped as lyophilized powder to China customers.</i>
Conjugation:	Unconjugated
Storage:	Store at -20°C as received.
Stability:	Stable for 12 months from date of receipt.
Predicted Protein Size:	30 kDa
Gene Name:	mitochondrial calcium uptake 1
Database Link:	<a href="#">NP_001182448</a> <a href="#">Entrez Gene 10367 Human</a> <a href="#">Q9BPX6</a>
Background:	MICU1 is a key regulator of mitochondrial calcium uptake required for calcium entry into mitochondrion. It may act as a calcium sensor via its EF-hand domains, gating the activity of a calcium channel partner. MICU1 induces T-helper 1-mediated autoreactivity, which is accompanied by the release of IFNG.
Synonyms:	CALC; CBARA1; EFHA3; MPXPS
Note:	Dog: 100%; Pig: 100%; Rat: 100%; Goat: 100%; Horse: 100%; Human: 100%; Mouse: 100%; Bovine: 100%; Rabbit: 100%; Zebrafish: 100%; Guinea pig: 100%



[View online »](#)

**Product images:**

WB Suggested Anti-MICU1 Antibody; Titration: 1.0 ug/ml; Positive Control: MCF7 Whole CellMICU1 is supported by BioGPS gene expression data to be expressed in MCF7