

## Product datasheet for **TA331379**

### C20orf112 (NOL4L) Rabbit Polyclonal Antibody

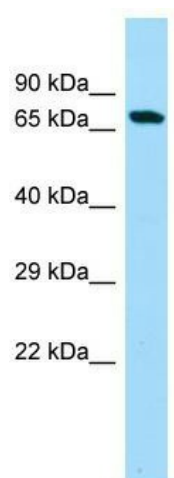
#### Product data:

Product Type:	Primary Antibodies
Applications:	WB
Recommended Dilution:	WB
Reactivity:	Human
Host:	Rabbit
Isotype:	IgG
Clonality:	Polyclonal
Immunogen:	The immunogen for Anti-C20orf112 antibody is: synthetic peptide directed towards the N-terminal region of Human C20orf112. Synthetic peptide located within the following region: LRVMSNSQEQDETSVSSSEDFDMSDSTWMSADPHLASSLSPSQDERMRSPQN
Formulation:	Liquid. Purified antibody supplied in 1x PBS buffer with 0.09% (w/v) sodium azide and 2% sucrose. <i>Note that this product is shipped as lyophilized powder to China customers.</i>
Conjugation:	Unconjugated
Storage:	Store at -20°C as received.
Stability:	Stable for 12 months from date of receipt.
Predicted Protein Size:	74 kDa
Gene Name:	nucleolar protein 4-like
Database Link:	<a href="#">NP_542183</a> <a href="#">Entrez Gene 140688 Human</a> <a href="#">Q96MY1</a>
Background:	The function of this protein remains unknown.
Synonyms:	C20orf112; C20orf113; dj1184F4.2; dj1184F4.4
Note:	Dog: 100%; Pig: 100%; Horse: 100%; Human: 100%; Bovine: 100%; Guinea pig: 100%; Rat: 93%; Mouse: 93%; Rabbit: 92%



[View online »](#)

## Product images:



WB Suggested Anti-C20orf112 Antibody; Titration:  
1.0 ug/ml; Positive Control: Fetal Liver