

## Product datasheet for **TA331377**

### MYG1 Rabbit Polyclonal Antibody

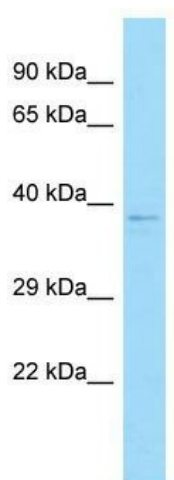
#### Product data:

Product Type:	Primary Antibodies
Applications:	WB
Recommended Dilution:	WB
Reactivity:	Human
Host:	Rabbit
Isotype:	IgG
Clonality:	Polyclonal
Immunogen:	The immunogen for Anti-C12orf10 antibody is: synthetic peptide directed towards the N-terminal region of Human C12orf10. Synthetic peptide located within the following region: DEALACALLRLLPEYRDAEIVRTDPEKLASCDIVVDVGGEYDPRRHRYD
Formulation:	Liquid. Purified antibody supplied in 1x PBS buffer with 0.09% (w/v) sodium azide and 2% sucrose.
Conjugation:	Unconjugated
Storage:	Store at -20°C as received.
Stability:	Stable for 12 months from date of receipt.
Predicted Protein Size:	41 kDa
Gene Name:	chromosome 12 open reading frame 10
Database Link:	<a href="#">NP_067653</a> <a href="#">Entrez Gene 60314 Human</a> <a href="#">Q86UA3</a>
Background:	The function of this protein remains unknown.
Synonyms:	Gamm1; MST024; MSTP024; MYG; MYG1
Note:	Rat: 100%; Human: 100%; Dog: 93%; Pig: 93%; Horse: 93%; Bovine: 93%; Rabbit: 93%; Guinea pig: 93%; Goat: 86%; Mouse: 79%; Yeast: 79%; Zebrafish: 79%



[View online »](#)

## Product images:



WB Suggested Anti-C12orf10 Antibody; Titration: 1.0 ug/ml; Positive Control: MCF7 Whole Cell  
C12orf10 is supported by BioGPS gene expression data to be expressed in MCF7