

Product datasheet for **TA331375**

BEX4 Rabbit Polyclonal Antibody

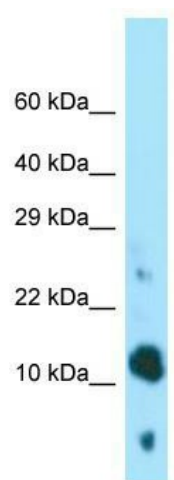
Product data:

Product Type:	Primary Antibodies
Applications:	WB
Recommended Dilution:	WB
Reactivity:	Human
Host:	Rabbit
Isotype:	IgG
Clonality:	Polyclonal
Immunogen:	The immunogen for Anti-BEX4 antibody is: synthetic peptide directed towards the N-terminal region of Human BEX4. Synthetic peptide located within the following region: PTQNEEESRHLGGGEGQKPGGNIRGRVRRLLVPNFRWAIPNRHIEHNEAR
Formulation:	Liquid. Purified antibody supplied in 1x PBS buffer with 0.09% (w/v) sodium azide and 2% sucrose. <i>Note that this product is shipped as lyophilized powder to China customers.</i>
Conjugation:	Unconjugated
Storage:	Store at -20°C as received.
Stability:	Stable for 12 months from date of receipt.
Predicted Protein Size:	13 kDa
Gene Name:	brain expressed X-linked 4
Database Link:	NP_001121160 Entrez Gene 56271 Human Q9NWD9
Background:	This gene is a member of the brain expressed X-linked gene family. The proteins encoded by some of the other members of this family act as transcription elongation factors which allow RNA polymerase II to escape pausing during elongation. Multiple alternatively spliced variants, encoding the same protein, have been identified.
Synonyms:	BEXL1
Note:	Human: 100%; Horse: 92%; Rabbit: 79%



[View online »](#)

Product images:



WB Suggested Anti-BEX4 Antibody; Titration: 1.0 ug/ml; Positive Control: HCT15 Whole Cell