

## Product datasheet for **TA331371**

### APOL3 Rabbit Polyclonal Antibody

#### Product data:

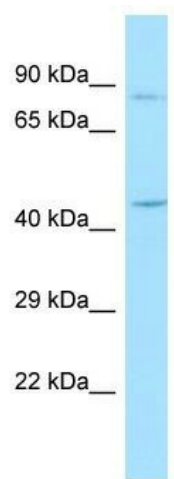
Product Type:	Primary Antibodies
Applications:	WB
Recommended Dilution:	WB
Reactivity:	Human
Host:	Rabbit
Isotype:	IgG
Clonality:	Polyclonal
Immunogen:	The immunogen for Anti-APOL3 antibody is: synthetic peptide directed towards the middle region of Human APOL3. Synthetic peptide located within the following region: AIEDEVVQQKDEQFREWFLKEFPQVKRKIQESIEKLRALANGIEEVHRGC
Formulation:	Liquid. Purified antibody supplied in 1x PBS buffer with 0.09% (w/v) sodium azide and 2% sucrose. <i>Note that this product is shipped as lyophilized powder to China customers.</i>
Conjugation:	Unconjugated
Storage:	Store at -20°C as received.
Stability:	Stable for 12 months from date of receipt.
Predicted Protein Size:	44 kDa
Gene Name:	apolipoprotein L3
Database Link:	<a href="#">NP_663615</a> <a href="#">Entrez Gene 80833 Human</a> <a href="#">O95236</a>
Background:	This gene is a member of the apolipoprotein L gene family, and it is present in a cluster with other family members on chromosome 6. The encoded protein is found in the cytoplasm, where it may affect the movement of lipids, including cholesterol, and/or allow the binding of lipids to organelles. In addition, expression of this gene is up-regulated by tumor necrosis factor-alpha in endothelial cells lining the normal and atherosclerotic iliac artery and aorta. Alternative splicing results in multiple transcript variants.
Synonyms:	apoL-III; APOLIII; CG12_1; CG121



[View online »](#)

Note: Human: 100%

### Product images:



WB Suggested Anti-APOL3 Antibody; Titration: 1.0 ug/ml; Positive Control: THP-1 Whole Cell