

Product datasheet for **TA331370**

ANKFY1 Rabbit Polyclonal Antibody

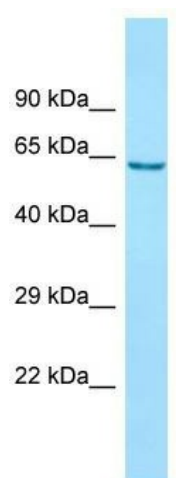
Product data:

Product Type:	Primary Antibodies
Applications:	WB
Recommended Dilution:	WB
Reactivity:	Human
Host:	Rabbit
Isotype:	IgG
Clonality:	Polyclonal
Immunogen:	The immunogen for Anti-ANKFY1 antibody is: synthetic peptide directed towards the C-terminal region of Human ANKFY1. Synthetic peptide located within the following region: VNGTSFDENSFAARLIQRGSHTDAPDTATGKARASRRGDAGVCRRQEMAC
Formulation:	Liquid. Purified antibody supplied in 1x PBS buffer with 0.09% (w/v) sodium azide and 2% sucrose. <i>Note that this product is shipped as lyophilized powder to China customers.</i>
Conjugation:	Unconjugated
Storage:	Store at -20°C as received.
Stability:	Stable for 12 months from date of receipt.
Predicted Protein Size:	54 kDa
Gene Name:	ankyrin repeat and FYVE domain containing 1
Database Link:	NP_065791 Entrez Gene 51479 Human Q9P2R3
Background:	This gene encodes a cytoplasmic protein that contains a coiled-coil structure and a BTB/POZ domain at its N-terminus, ankyrin repeats in the middle portion, and a FYVE-finger motif at its C-terminus. This protein belongs to a subgroup of double zinc finger proteins which may be involved in vesicle or protein transport. Alternate splicing results in multiple transcript variants of this gene.
Synonyms:	ANKHZN; DKFZp686M19106; KIAA1255; ZFYVE14



[View online »](#)

Product images:



WB Suggested Anti-ANKFY1 Antibody; Titration: 1.0 ug/ml; Positive Control: 721_B Whole Cell/ANKFY1 is supported by BioGPS gene expression data to be expressed in 721_B