

## Product datasheet for **TA331368**

### ADAT2 Rabbit Polyclonal Antibody

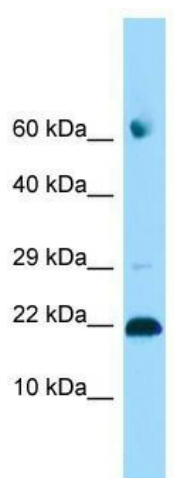
#### Product data:

Product Type:	Primary Antibodies
Applications:	WB
Recommended Dilution:	WB
Reactivity:	Human
Host:	Rabbit
Isotype:	IgG
Clonality:	Polyclonal
Immunogen:	The immunogen for Anti-ADAT2 antibody is: synthetic peptide directed towards the C-terminal region of Human ADAT2. Synthetic peptide located within the following region: NIASADLPNTGRPFQCIPGYRAEEAVEMLKTFYKQENPNAPKSKVRKKEC
Formulation:	Liquid. Purified antibody supplied in 1x PBS buffer with 0.09% (w/v) sodium azide and 2% sucrose. <i>Note that this product is shipped as lyophilized powder to China customers.</i>
Conjugation:	Unconjugated
Storage:	Store at -20°C as received.
Stability:	Stable for 12 months from date of receipt.
Predicted Protein Size:	16 kDa
Gene Name:	adenosine deaminase, tRNA specific 2
Database Link:	<a href="#">NP_872309</a> <a href="#">Entrez Gene 134637 Human</a> <a href="#">Q7Z6V5</a>
Background:	ADAT2 is probably participates in deamination of adenosine-34 to inosine in many tRNAs.
Synonyms:	DEADC1; dj20N2; dj20N2.1; TAD2
Note:	Dog: 100%; Pig: 100%; Horse: 100%; Human: 100%; Bovine: 100%; Rabbit: 100%; Guinea pig: 100%; Rat: 93%; Mouse: 93%; Zebrafish: 92%



[View online »](#)

## Product images:



WB Suggested Anti-ADAT2 Antibody; Titration: 1.0 ug/ml; Positive Control: 293T Whole Cell