

Product datasheet for **TA331367**

TOR1AIP2 Rabbit Polyclonal Antibody

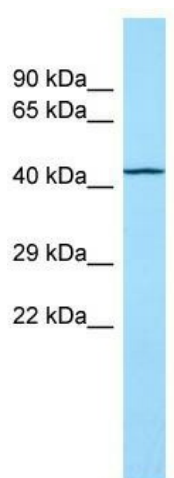
Product data:

Product Type:	Primary Antibodies
Applications:	WB
Recommended Dilution:	WB
Reactivity:	Human
Host:	Rabbit
Isotype:	IgG
Clonality:	Polyclonal
Immunogen:	The immunogen for Anti-TOR1AIP2 antibody is: synthetic peptide directed towards the N-terminal region of Human TOR1AIP2. Synthetic peptide located within the following region: PDEANVGKHPKDKTE DENKQSFLDGGKGHHLPSENLGKEPLDPDPSHSPS
Formulation:	Liquid. Purified antibody supplied in 1x PBS buffer with 0.09% (w/v) sodium azide and 2% sucrose. <i>Note that this product is shipped as lyophilized powder to China customers.</i>
Conjugation:	Unconjugated
Storage:	Store at -20°C as received.
Stability:	Stable for 12 months from date of receipt.
Predicted Protein Size:	51 kDa
Gene Name:	torsin 1A interacting protein 2
Database Link:	NP_659471 Entrez Gene 163590 Human Q9H496
Background:	TOR1AIP2 regulates the distribution of TOR1A between the endoplasmic reticulum and the nuclear envelope.
Synonyms:	IFRG15; LULL1; NET9
Note:	Rat: 100%; Human: 100%; Yeast: 100%; Dog: 83%; Horse: 79%
Protein Families:	Transmembrane



[View online »](#)

Product images:



WB Suggested Anti-TOR1AIP2 Antibody; Titration:
1.0 ug/ml; Positive Control: Fetal Lung