

## Product datasheet for **TA331366**

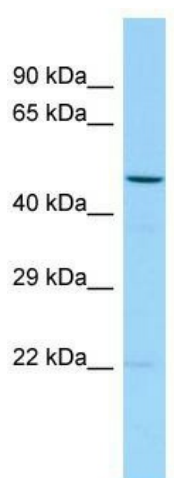
### TMED2 Rabbit Polyclonal Antibody

#### Product data:

Product Type:	Primary Antibodies
Applications:	WB
Recommended Dilution:	WB
Reactivity:	Human
Host:	Rabbit
Isotype:	IgG
Clonality:	Polyclonal
Immunogen:	The immunogen for Anti-TMED2 antibody is: synthetic peptide directed towards the middle region of Human TMED2. Synthetic peptide located within the following region: SNRMSTMTPKIVMFTIDIGEAPKGQDMETEAHQNKLEEMINELAVAMTAV
Formulation:	Liquid. Purified antibody supplied in 1x PBS buffer with 0.09% (w/v) sodium azide and 2% sucrose. <i>Note that this product is shipped as lyophilized powder to China customers.</i>
Conjugation:	Unconjugated
Storage:	Store at -20°C as received.
Stability:	Stable for 12 months from date of receipt.
Predicted Protein Size:	22 kDa
Gene Name:	transmembrane p24 trafficking protein 2
Database Link:	<a href="#">NP_006806</a> <a href="#">Entrez Gene 10959 Human</a> <a href="#">Q15363</a>
Background:	TMED2 is involved in vesicular protein trafficking and mainly functions in the early secretory pathway but also in post-Golgi membranes.
Synonyms:	p24; P24A; p24b1; p24beta1; RNP24
Note:	Dog: 100%; Pig: 100%; Rat: 100%; Horse: 100%; Human: 100%; Mouse: 100%; Bovine: 100%; Rabbit: 100%; Zebrafish: 100%; Guinea pig: 100%
Protein Families:	Transmembrane



[View online »](#)

**Product images:**

WB Suggested Anti-TMED2 Antibody; Titration:  
1.0 ug/ml; Positive Control: Placenta