

Product datasheet for **TA331365**

TESK2 Rabbit Polyclonal Antibody

Product data:

Product Type:	Primary Antibodies
Applications:	WB
Recommended Dilution:	WB
Reactivity:	Human
Host:	Rabbit
Isotype:	IgG
Clonality:	Polyclonal
Immunogen:	The immunogen for Anti-TESK2 antibody is: synthetic peptide directed towards the C-terminal region of Human TESK2. Synthetic peptide located within the following region: AHEAMDCSILQEENGFGSRPQGTSPCPAGASEEMEVEERPAGSTPATFST
Formulation:	Liquid. Purified antibody supplied in 1x PBS buffer with 0.09% (w/v) sodium azide and 2% sucrose. <i>Note that this product is shipped as lyophilized powder to China customers.</i>
Conjugation:	Unconjugated
Storage:	Store at -20°C as received.
Stability:	Stable for 12 months from date of receipt.
Predicted Protein Size:	61 kDa
Gene Name:	testis-specific kinase 2
Database Link:	NP_009101 Entrez Gene 10420 Human Q96S53
Background:	This gene product is a serine/threonine protein kinase that contains an N-terminal protein kinase domain that is structurally similar to the kinase domains of testis-specific protein kinase-1 and the LIM motif-containing protein kinases (LIMKs). Its overall structure is most related to the former, indicating that it belongs to the TESK subgroup of the LIMK/TESK family of protein kinases. This gene is predominantly expressed in testis and prostate. The developmental expression pattern of the rat gene in testis suggests an important role for this gene in meiotic stages and/or early stages of spermiogenesis.



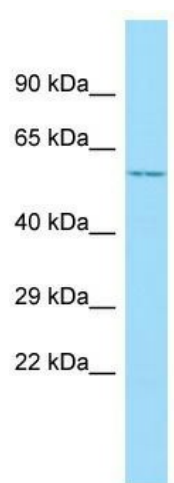
[View online »](#)

Synonyms: MGC29168; OTTMUSP00000010191; testis-specific kinase 2

Note: Human: 100%; Rabbit: 92%; Horse: 86%; Bovine: 86%; Pig: 83%; Dog: 79%; Rat: 79%; Mouse: 79%

Protein Families: Druggable Genome, Protein Kinase

Product images:



WB Suggested Anti-TESK2 Antibody; Titration: 1.0 ug/ml; Positive Control: MCF7 Whole Cell