

Product datasheet for **TA331364**

TBCEL Rabbit Polyclonal Antibody

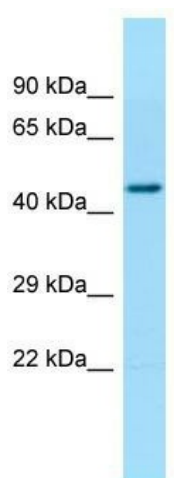
Product data:

Product Type:	Primary Antibodies
Applications:	WB
Recommended Dilution:	WB
Reactivity:	Human
Host:	Rabbit
Isotype:	IgG
Clonality:	Polyclonal
Immunogen:	The immunogen for Anti-TBCEL antibody is: synthetic peptide directed towards the C-terminal region of Human TBCEL. Synthetic peptide located within the following region: ISLHKSGLQSWEDIDKLNSFPKLEEVRLGIPLLQPYTTEERRKLVIALR
Formulation:	Liquid. Purified antibody supplied in 1x PBS buffer with 0.09% (w/v) sodium azide and 2% sucrose. <i>Note that this product is shipped as lyophilized powder to China customers.</i>
Conjugation:	Unconjugated
Storage:	Store at -20°C as received.
Stability:	Stable for 12 months from date of receipt.
Predicted Protein Size:	47 kDa
Gene Name:	tubulin folding cofactor E-like
Database Link:	NP_689928 Entrez Gene 219899 Human Q5QJ74
Background:	TBCEL acts as a regulator of tubulin stability.
Synonyms:	El; LRRC35
Note:	Dog: 100%; Pig: 100%; Rat: 100%; Horse: 100%; Human: 100%; Mouse: 100%; Bovine: 100%; Rabbit: 100%; Guinea pig: 100%; Zebrafish: 85%
Protein Families:	Druggable Genome



[View online »](#)

Product images:



WB Suggested Anti-TBCEL Antibody; Titration: 1.0 ug/ml; Positive Control: Fetal Heart