

Product datasheet for **TA331363**

GPR58 (TAAR2) Rabbit Polyclonal Antibody

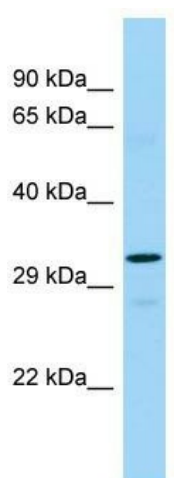
Product data:

Product Type:	Primary Antibodies
Applications:	WB
Recommended Dilution:	WB
Reactivity:	Human
Host:	Rabbit
Isotype:	IgG
Clonality:	Polyclonal
Immunogen:	The immunogen for Anti-TAAR2 antibody is: synthetic peptide directed towards the C-terminal region of Human TAAR2. Synthetic peptide located within the following region: ENQNNQVKKDKKAAKTLGIVIGVFLLCWFPCFFTILLDPFLNFSTPVVLF
Formulation:	Liquid. Purified antibody supplied in 1x PBS buffer with 0.09% (w/v) sodium azide and 2% sucrose. <i>Note that this product is shipped as lyophilized powder to China customers.</i>
Conjugation:	Unconjugated
Storage:	Store at -20°C as received.
Stability:	Stable for 12 months from date of receipt.
Predicted Protein Size:	34 kDa
Gene Name:	trace amine associated receptor 2
Database Link:	NP_055441 Entrez Gene 9287 Human Q9P1P5
Background:	TAAR2 is an orphan receptor.
Synonyms:	GPR58; taR-2
Note:	Human: 100%; Pig: 86%; Rat: 86%; Mouse: 86%; Bovine: 86%; Horse: 79%; Rabbit: 79%
Protein Families:	Druggable Genome, GPCR, Transmembrane
Protein Pathways:	Neuroactive ligand-receptor interaction



[View online »](#)

Product images:



WB Suggested Anti-TAAR2 Antibody; Titration: 1.0 ug/ml; Positive Control: Placenta