

## Product datasheet for **TA331361**

### BRDG 1 (STAP1) Rabbit Polyclonal Antibody

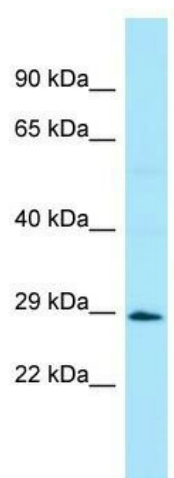
#### Product data:

Product Type:	Primary Antibodies
Applications:	WB
Recommended Dilution:	WB
Reactivity:	Human
Host:	Rabbit
Isotype:	IgG
Clonality:	Polyclonal
Immunogen:	The immunogen for Anti-STAP1 antibody is: synthetic peptide directed towards the middle region of Human STAP1. Synthetic peptide located within the following region: TELSVPQNVSLLPGQVIKLHEVLEREKKRRIETEQSTSVEKEKEPTEDYV
Formulation:	Liquid. Purified antibody supplied in 1x PBS buffer with 0.09% (w/v) sodium azide and 2% sucrose. <i>Note that this product is shipped as lyophilized powder to China customers.</i>
Conjugation:	Unconjugated
Storage:	Store at -20°C as received.
Stability:	Stable for 12 months from date of receipt.
Predicted Protein Size:	32 kDa
Gene Name:	signal transducing adaptor family member 1
Database Link:	<a href="#">NP_036240</a> <a href="#">Entrez Gene 26228 Human</a> <a href="#">Q9ULZ2</a>
Background:	The protein encoded by this gene functions as a docking protein acting downstream of Tec tyrosine kinase in B cell antigen receptor signaling. The protein is directly phosphorylated by Tec in vitro where it participates in a positive feedback loop, increasing Tec activity.
Synonyms:	BRDG1; STAP-1
Note:	Human: 100%; Horse: 77%; Yeast: 77%; Rabbit: 77%
Protein Families:	Druggable Genome



[View online »](#)

## Product images:



WB Suggested Anti-STAP1 Antibody; Titration: 1.0 ug/ml; Positive Control: HCT15 Whole Cell