

Product datasheet for **TA331360**

SPSB1 Rabbit Polyclonal Antibody

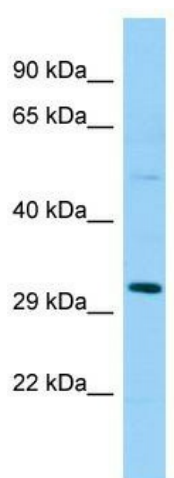
Product data:

Product Type:	Primary Antibodies
Applications:	WB
Recommended Dilution:	WB
Reactivity:	Human
Host:	Rabbit
Isotype:	IgG
Clonality:	Polyclonal
Immunogen:	The immunogen for Anti-SPSB1 antibody is: synthetic peptide directed towards the middle region of Human SPSB1. Synthetic peptide located within the following region: RGLHVWQITWAMRQRGTHAVVGVATADAPLHSVGYTTLVGNNHESWGWDL
Formulation:	Liquid. Purified antibody supplied in 1x PBS buffer with 0.09% (w/v) sodium azide and 2% sucrose. <i>Note that this product is shipped as lyophilized powder to China customers.</i>
Conjugation:	Unconjugated
Storage:	Store at -20°C as received.
Stability:	Stable for 12 months from date of receipt.
Predicted Protein Size:	30 kDa
Gene Name:	splA/ryanodine receptor domain and SOCS box containing 1
Database Link:	NP_079382 Entrez Gene 80176 Human Q96BD6
Background:	SPSB1 is a probable substrate recognition component of a SCF-like ECS (Elongin BC-CUL2/5-SOCS-box protein) E3 ubiquitin-protein ligase complex which mediates the ubiquitination and subsequent proteasomal degradation of target proteins.
Synonyms:	SSB-1; SSB1
Note:	Dog: 100%; Pig: 100%; Rat: 100%; Horse: 100%; Human: 100%; Mouse: 100%; Bovine: 100%; Rabbit: 100%; Guinea pig: 100%; Zebrafish: 86%
Protein Families:	Druggable Genome



[View online »](#)

Product images:



WB Suggested Anti-SPSB1 Antibody; Titration: 1.0 ug/ml; Positive Control: Fetal Lung