

## Product datasheet for **TA331359**

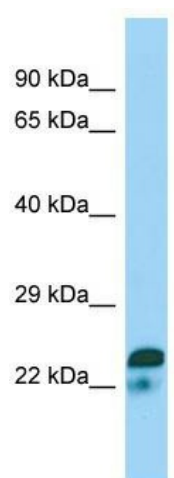
### SPIN2A Rabbit Polyclonal Antibody

#### Product data:

Product Type:	Primary Antibodies
Applications:	WB
Recommended Dilution:	WB
Reactivity:	Human
Host:	Rabbit
Isotype:	IgG
Clonality:	Polyclonal
Immunogen:	The immunogen for Anti-SPIN2A antibody is: synthetic peptide directed towards the N-terminal region of Human SPIN2A. Synthetic peptide located within the following region: MTKKKVSQKKQRGRPSSQPCRNIVGCRISHGWKEGDEPITQWKGTVLDQV
Formulation:	Liquid. Purified antibody supplied in 1x PBS buffer with 0.09% (w/v) sodium azide and 2% sucrose. <i>Note that this product is shipped as lyophilized powder to China customers.</i>
Conjugation:	Unconjugated
Storage:	Store at -20°C as received.
Stability:	Stable for 12 months from date of receipt.
Predicted Protein Size:	25 kDa
Gene Name:	spindlin family member 2A
Database Link:	<a href="#">NP_061876</a> <a href="#">Entrez Gene 54466 Human Q99865</a>
Background:	This gene encodes one of three members of the DXF34 gene family, located in a 100-kb region of chromosome Xp11.21.
Synonyms:	dJ323P24.1; DXF34; SPIN2; TDRD25
Note:	Human: 100%; Dog: 93%; Pig: 93%; Rat: 93%; Horse: 93%; Bovine: 93%; Rabbit: 92%; Guinea pig: 86%



[View online »](#)

**Product images:**

WB Suggested Anti-SPIN2A Antibody; Titration:  
1.0 ug/ml; Positive Control: Jurkat Whole Cell