

## Product datasheet for **TA331358**

### SLC35B2 Rabbit Polyclonal Antibody

#### Product data:

Product Type:	Primary Antibodies
Applications:	WB
Recommended Dilution:	WB
Reactivity:	Human
Host:	Rabbit
Isotype:	IgG
Clonality:	Polyclonal
Immunogen:	The immunogen for Anti-SLC35B2 antibody is: synthetic peptide directed towards the C-terminal region of Human SLC35B2. Synthetic peptide located within the following region: CLLYGHTVTVVGGGLGVAVVFAALLLRVYARGRLKQRGKKAVPVESPVQKV
Formulation:	Liquid. Purified antibody supplied in 1x PBS buffer with 0.09% (w/v) sodium azide and 2% sucrose. <i>Note that this product is shipped as lyophilized powder to China customers.</i>
Conjugation:	Unconjugated
Storage:	Store at -20°C as received.
Stability:	Stable for 12 months from date of receipt.
Predicted Protein Size:	48 kDa
Gene Name:	solute carrier family 35 member B2
Database Link:	<a href="#">NP_835361</a> <a href="#">Entrez Gene 347734 Human</a> <a href="#">Q8TB61</a>
Background:	Sulfotransferases use an activated form of sulfate, 3-prime-phosphoadenosine 5-prime-phosphosulfate (PAPS), as a common sulfate donor for sulfation of glycoproteins, proteoglycans, and glycolipids in the endoplasmic reticulum and Golgi apparatus. SLC35B2 is located in the microsomal membrane and transports PAPS from the cytosol, where it is synthesized, into the Golgi lumen.
Synonyms:	PAPST1; SLL; UGTrel4

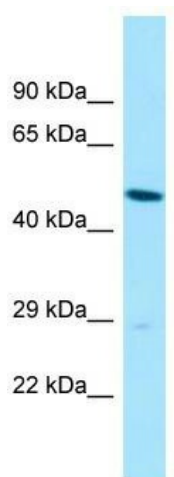


[View online »](#)

**Note:** Dog: 100%; Pig: 100%; Horse: 100%; Human: 100%; Bovine: 100%; Rat: 93%; Mouse: 93%; Guinea pig: 93%

**Protein Families:** Druggable Genome, Transmembrane

**Product images:**



WB Suggested Anti-SLC35B2 Antibody; Titration: 1.0 ug/ml; Positive Control: HepG2 Whole Cell