

## Product datasheet for **TA331357**

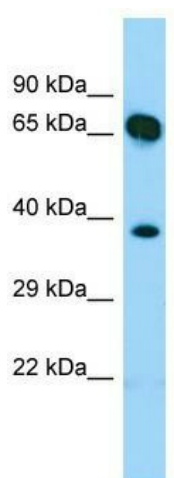
### SHC4 Rabbit Polyclonal Antibody

#### Product data:

Product Type:	Primary Antibodies
Applications:	WB
Recommended Dilution:	WB
Reactivity:	Human
Host:	Rabbit
Isotype:	IgG
Clonality:	Polyclonal
Immunogen:	The immunogen for Anti-SHC4 antibody is: synthetic peptide directed towards the N-terminal region of Human SHC4. Synthetic peptide located within the following region: NPATLLSLKNFCLGTKEVPRLKLQESRDPGSSGPSSPETSLSRSGTAPPP
Formulation:	Liquid. Purified antibody supplied in 1x PBS buffer with 0.09% (w/v) sodium azide and 2% sucrose. <i>Note that this product is shipped as lyophilized powder to China customers.</i>
Conjugation:	Unconjugated
Storage:	Store at -20°C as received.
Stability:	Stable for 12 months from date of receipt.
Predicted Protein Size:	69 kDa
Gene Name:	SHC adaptor protein 4
Database Link:	<a href="#">NP_976224</a> <a href="#">Entrez Gene 399694 Human</a> <a href="#">Q6S5L8</a>
Background:	SHC4 activates both Ras-dependent and Ras-independent migratory pathways in melanomas. It contributes to the early phases of agrin-induced tyrosine phosphorylation of CHRNB1.
Synonyms:	RaLP; SHCD
Note:	Human: 100%
Protein Pathways:	Chemokine signaling pathway, Chronic myeloid leukemia, ErbB signaling pathway, Focal adhesion, Glioma, Insulin signaling pathway, Natural killer cell mediated cytotoxicity, Neurotrophin signaling pathway



[View online »](#)

**Product images:**

WB Suggested Anti-SHC4 Antibody; Titration: 1.0 ug/ml; Positive Control: Fetal Heart