

Product datasheet for **TA331356**

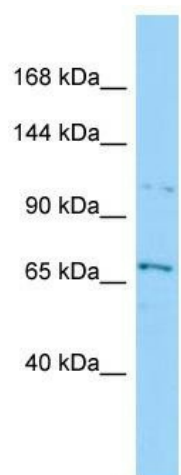
SEC31B Rabbit Polyclonal Antibody

Product data:

Product Type:	Primary Antibodies
Applications:	WB
Recommended Dilution:	WB
Reactivity:	Human
Host:	Rabbit
Isotype:	IgG
Clonality:	Polyclonal
Immunogen:	The immunogen for Anti-SEC31B antibody is: synthetic peptide directed towards the middle region of Human SEC31B. Synthetic peptide located within the following region: VGLGESPPKGNLNSDRQQAFCSQASKHTTKEASASSAFFDELVPQNMT
Formulation:	Liquid. Purified antibody supplied in 1x PBS buffer with 0.09% (w/v) sodium azide and 2% sucrose.
Purification:	Affinity Purified
Conjugation:	Unconjugated
Storage:	Store at -20°C as received.
Stability:	Stable for 12 months from date of receipt.
Predicted Protein Size:	128 kDa
Gene Name:	SEC31 homolog B, COPII coat complex component
Database Link:	NP_056305 Entrez Gene 25956 Human Q9NQW1
Background:	This gene encodes a protein of unknown function. The protein has moderate similarity to rat VAP1 protein which is an endosomal membrane-associated protein, containing a putative Ca ²⁺ /calmodulin-dependent kinase II phosphorylation site.
Synonyms:	SEC31B-1; SEC31L2
Note:	Human: 100%



[View online »](#)

Product images:

Host: Rabbit; Target Name: SEC31B; Sample
Tissue: HepG2 Whole Cell lysates; Antibody
Dilution: 1.0ug/ml; SEC31B is supported by
BioGPS gene expression data to be expressed in
HepG2