

## Product datasheet for **TA331355**

### SBSN Rabbit Polyclonal Antibody

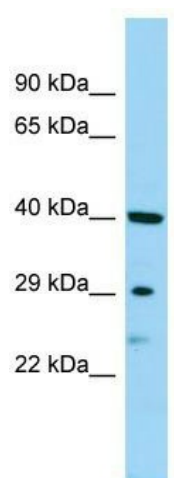
#### Product data:

Product Type:	Primary Antibodies
Applications:	WB
Recommended Dilution:	WB
Reactivity:	Human
Host:	Rabbit
Isotype:	IgG
Clonality:	Polyclonal
Immunogen:	The immunogen for Anti-SBSN antibody is: synthetic peptide directed towards the middle region of Human SBSN. Synthetic peptide located within the following region: INHGIGQAGKEAEKLGHGVNNAAGQAGKEADKAVQGFHTGVHQAGKEAEK
Formulation:	Liquid. Purified antibody supplied in 1x PBS buffer with 0.09% (w/v) sodium azide and 2% sucrose. <i>Note that this product is shipped as lyophilized powder to China customers.</i>
Conjugation:	Unconjugated
Storage:	Store at -20°C as received.
Stability:	Stable for 12 months from date of receipt.
Predicted Protein Size:	27 kDa
Gene Name:	suprabasin
Database Link:	<a href="#">NP_940940</a> <a href="#">Entrez Gene 374897 Human</a> <a href="#">Q6UWP8</a>
Background:	The function of this protein remains unknown.
Synonyms:	UNQ698
Note:	Human: 100%; Pig: 79%; Horse: 79%; Bovine: 79%; Rabbit: 79%



[View online »](#)

## Product images:



WB Suggested Anti-SBSN Antibody; Titration: 1.0 ug/ml; Positive Control: Jurkat Whole Cell