

Product datasheet for **TA331354**

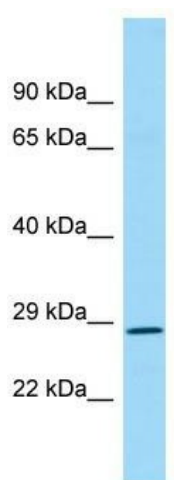
REP15 Rabbit Polyclonal Antibody

Product data:

Product Type:	Primary Antibodies
Applications:	WB
Recommended Dilution:	WB
Reactivity:	Human
Host:	Rabbit
Isotype:	IgG
Clonality:	Polyclonal
Immunogen:	The immunogen for Anti-REP15 antibody is: synthetic peptide directed towards the N-terminal region of Human REP15. Synthetic peptide located within the following region: YPPSKLCPAANTLNEIFLIHFITFCQEKGVDEWLTTTKMTKHQAFLFGAD
Formulation:	Liquid. Purified antibody supplied in 1x PBS buffer with 0.09% (w/v) sodium azide and 2% sucrose.
Conjugation:	Unconjugated
Storage:	Store at -20°C as received.
Stability:	Stable for 12 months from date of receipt.
Predicted Protein Size:	26 kDa
Gene Name:	RAB15 effector protein
Database Link:	NP_001025045 Entrez Gene 387849 Human Q6BDI9
Background:	REP15 is a binding partner of the RAB GTPase family member RAB15 that facilitates transferrin receptor recycling from the endocytic recycling compartment .
Synonyms:	RAB15EP
Note:	Human: 100%; Pig: 93%; Horse: 93%; Mouse: 86%; Bovine: 86%; Rat: 85%; Rabbit: 79%



[View online »](#)

Product images:

WB Suggested Anti-REP15 Antibody; Titration: 1.0 ug/ml; Positive Control: Fetal Kidney