

Product datasheet for **TA331353**

RABGAP1L Rabbit Polyclonal Antibody

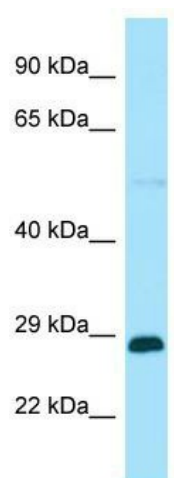
Product data:

Product Type:	Primary Antibodies
Applications:	WB
Recommended Dilution:	WB
Reactivity:	Human
Host:	Rabbit
Isotype:	IgG
Clonality:	Polyclonal
Immunogen:	The immunogen for Anti-RABGAP1L antibody is: synthetic peptide directed towards the middle region of Human RABGAP1L. Synthetic peptide located within the following region: EVSLQRES DKKEEPVTP TSGGGP MSPQDDEAEEESD NELSSGTGDVSKDC
Formulation:	Liquid. Purified antibody supplied in 1x PBS buffer with 0.09% (w/v) sodium azide and 2% sucrose. <i>Note that this product is shipped as lyophilized powder to China customers.</i>
Purification:	Affinity Purified
Conjugation:	Unconjugated
Storage:	Store at -20°C as received.
Stability:	Stable for 12 months from date of receipt.
Predicted Protein Size:	27 kDa
Gene Name:	RAB GTPase activating protein 1-like
Database Link:	NP_055672 Entrez Gene 9910 Human B7ZAP0
Background:	The function of this protein remains unknown.
Synonyms:	HHL; TBC1D18
Note:	Rat: 100%; Human: 100%; Rabbit: 100%; Pig: 93%; Horse: 93%; Mouse: 93%; Dog: 86%; Guinea pig: 86%



[View online »](#)

Product images:



Host: Rabbit; Target Name: RABGAP1L; Sample
Tissue: HT1080 Whole Cell lysates; Antibody
Dilution: 1.0ug/ml