

## Product datasheet for **TA331348**

### PLEKHA3 Rabbit Polyclonal Antibody

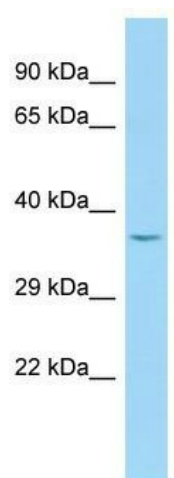
#### Product data:

Product Type:	Primary Antibodies
Applications:	WB
Recommended Dilution:	WB
Reactivity:	Human
Host:	Rabbit
Isotype:	IgG
Clonality:	Polyclonal
Immunogen:	The immunogen for Anti-PLEKHA3 antibody is: synthetic peptide directed towards the N-terminal region of Human PLEKHA3. Synthetic peptide located within the following region: DTRTKKEKEISETSESLKTKMSELRLYCDLLMQQVHTIQEFVHHDENHSS
Formulation:	Liquid. Purified antibody supplied in 1x PBS buffer with 0.09% (w/v) sodium azide and 2% sucrose. <i>Note that this product is shipped as lyophilized powder to China customers.</i>
Conjugation:	Unconjugated
Storage:	Store at -20°C as received.
Stability:	Stable for 12 months from date of receipt.
Predicted Protein Size:	34 kDa
Gene Name:	pleckstrin homology domain containing A3
Database Link:	<a href="#">NP_061964</a> <a href="#">Entrez Gene 65977 Human Q9HB20</a>
Background:	PLEKHA3 binds specifically to phosphatidylinositol 4-phosphate (PtdIns4P), but not to other phosphoinositides.
Synonyms:	FAPP1
Note:	Dog: 100%; Pig: 100%; Rat: 100%; Horse: 100%; Human: 100%; Bovine: 100%; Rabbit: 100%; Mouse: 93%; Guinea pig: 93%



[View online »](#)

## Product images:



WB Suggested Anti-PLEKHA3 Antibody; Titration:  
1.0 ug/ml; Positive Control: Fetal Liver