

Product datasheet for **TA331347**

PIP5K1 beta (PIP5K1B) Rabbit Polyclonal Antibody

Product data:

Product Type:	Primary Antibodies
Applications:	WB
Recommended Dilution:	WB
Reactivity:	Human
Host:	Rabbit
Isotype:	IgG
Clonality:	Polyclonal
Immunogen:	The immunogen for Anti-PIP5K1B antibody is: synthetic peptide directed towards the C-terminal region of Human PIP5K1B. Synthetic peptide located within the following region: VFKKIQALKASPSKKRCSIAALKATSQEIVSSISQEWKDEKRDLLTEGQ
Formulation:	Liquid. Purified antibody supplied in 1x PBS buffer with 0.09% (w/v) sodium azide and 2% sucrose. <i>Note that this product is shipped as lyophilized powder to China customers.</i>
Conjugation:	Unconjugated
Storage:	Store at -20°C as received.
Stability:	Stable for 12 months from date of receipt.
Predicted Protein Size:	61 kDa
Gene Name:	phosphatidylinositol-4-phosphate 5-kinase type 1 beta
Database Link:	NP_003549 Entrez Gene 8395 Human O14986
Background:	PIP5K1B participates in the biosynthesis of phosphatidylinositol 4,5-bisphosphate. It mediates RAC1-dependent reorganization of actin filaments and contributes to the activation of PLD2. Together with PIP5K1A is required after stimulation of G-protein coupled receptors for stable platelet adhesion.
Synonyms:	MSS4; STM7
Note:	Dog: 100%; Pig: 100%; Rat: 100%; Horse: 100%; Human: 100%; Mouse: 100%; Bovine: 100%; Rabbit: 93%

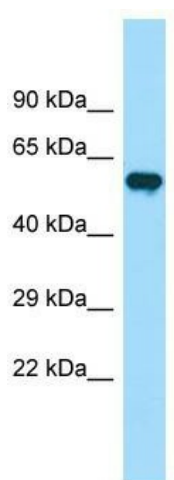


[View online »](#)

Protein Families: Druggable Genome

Protein Pathways: Endocytosis, Fc gamma R-mediated phagocytosis, Inositol phosphate metabolism, Metabolic pathways, Phosphatidylinositol signaling system, Regulation of actin cytoskeleton

Product images:



WB Suggested Anti-PIP5K1B Antibody; Titration: 1.0 ug/ml; Positive Control: Fetal Liver