

## Product datasheet for TA331346

### PAPLN Rabbit Polyclonal Antibody

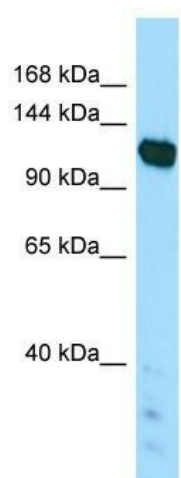
#### Product data:

Product Type:	Primary Antibodies
Applications:	WB
Recommended Dilution:	WB
Reactivity:	Human
Host:	Rabbit
Isotype:	IgG
Clonality:	Polyclonal
Immunogen:	The immunogen for Anti-PAPLN antibody is: synthetic peptide directed towards the C-terminal region of Human PAPLN. Synthetic peptide located within the following region: QPISSDRHRLQFDGSLIIHPLQAEDAGTYSCGSTRPGRDSQKIQLRRIIGG
Formulation:	Liquid. Purified antibody supplied in 1x PBS buffer with 0.09% (w/v) sodium azide and 2% sucrose. <i>Note that this product is shipped as lyophilized powder to China customers.</i>
Conjugation:	Unconjugated
Storage:	Store at -20°C as received.
Stability:	Stable for 12 months from date of receipt.
Predicted Protein Size:	138 kDa
Gene Name:	papilin, proteoglycan-like sulfated glycoprotein
Database Link:	<a href="#">NP_775733</a> <a href="#">Entrez Gene 89932 Human</a> <a href="#">O95428</a>
Background:	The function of this protein remains unknown.
Synonyms:	DKFZp434F053; MGC50452
Note:	Human: 100%; Pig: 92%; Dog: 86%; Horse: 86%; Rabbit: 85%



[View online »](#)

## Product images:



WB Suggested Anti-PAPLN Antibody; Titration: 1.0 ug/ml; Positive Control: HepG2 Whole Cell